

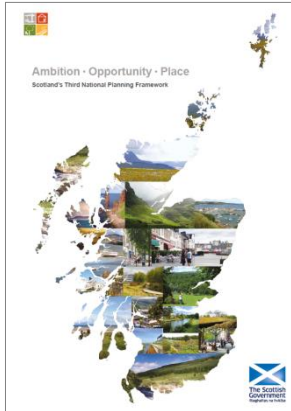
Edinburgh Local Development Plan

Edinburgh Partnership Board

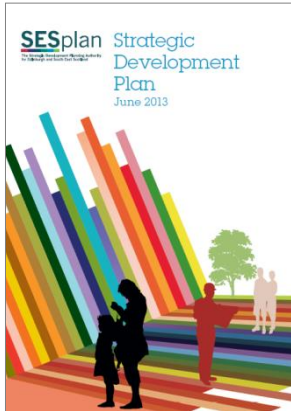
28 September 2017



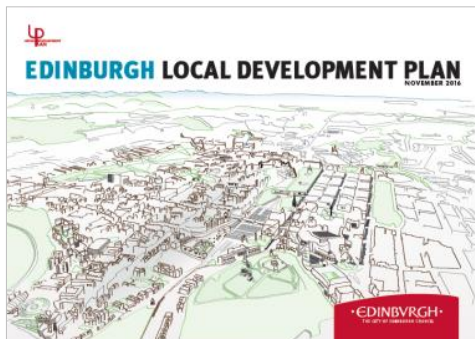
Planning Policy Hierarchy



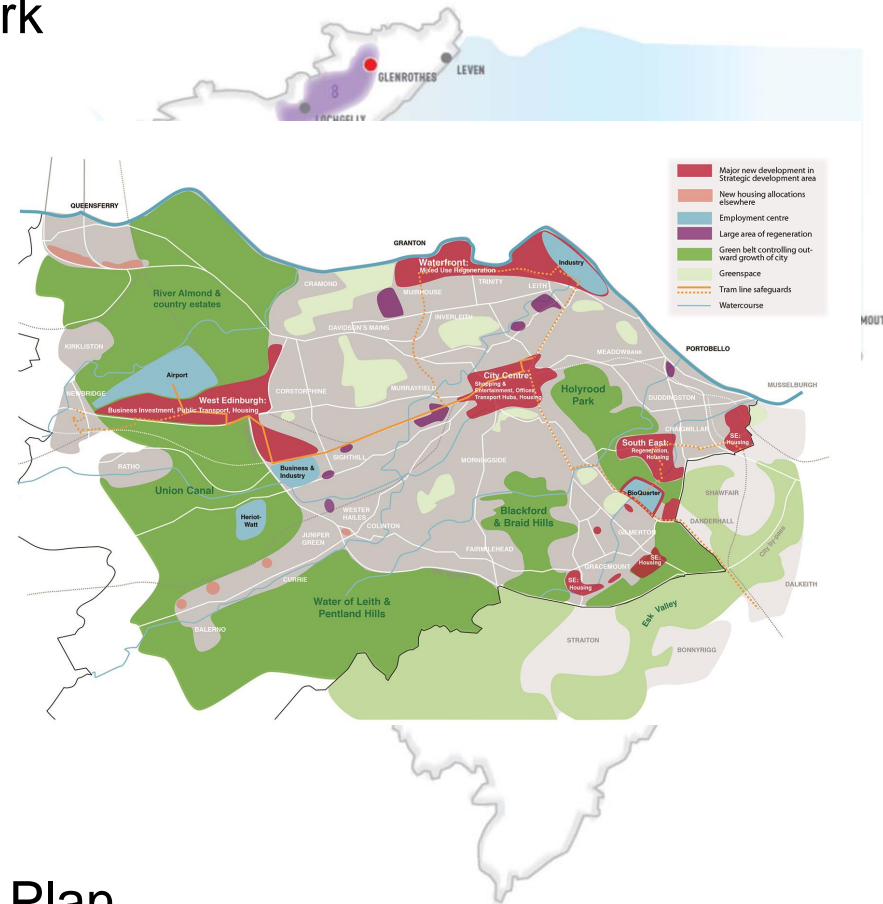
National Planning Framework
(Scottish Government)



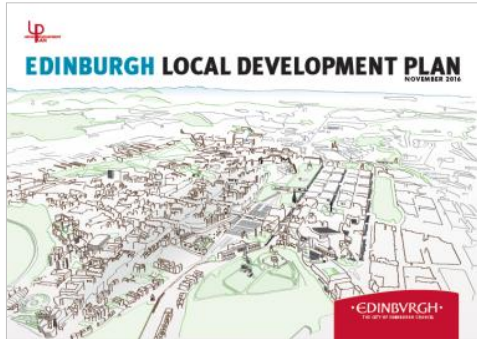
Strategic Development Plan
(SESplan)



Local Development Plan
(City of Edinburgh Council)

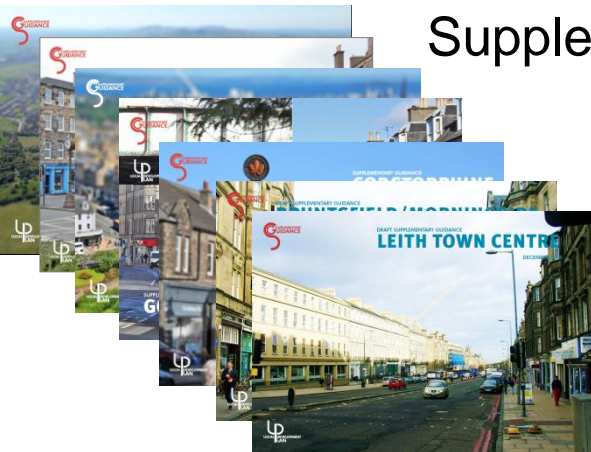


Planning Policy Hierarchy



Local Development Plan

Supplementary Guidance



Non-Statutory Guidance



Part of the
development
plan

LDP

Stage 1

Main Issues
Report

October 2011

3 months consultation

Stage 2

Proposed
Plan

March 2013

Representations 6 wks)

Stage 3

Second
Proposed Plan

June 2014

Stage 4

Stage 5

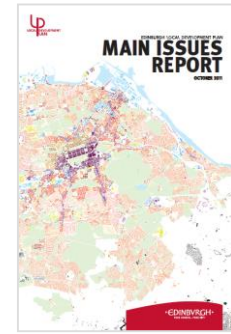
Examination

Stage 6

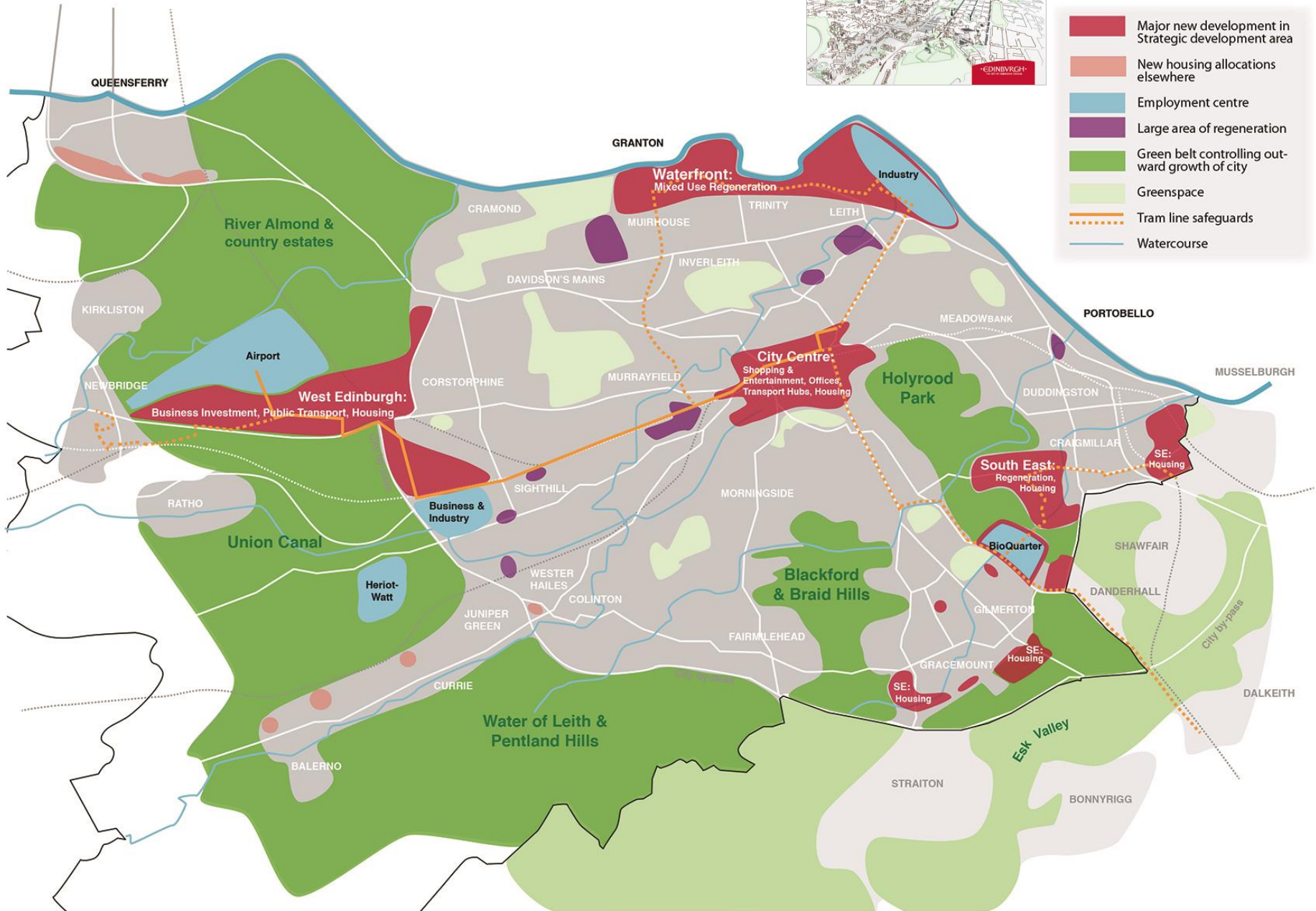
Adopted
Plan

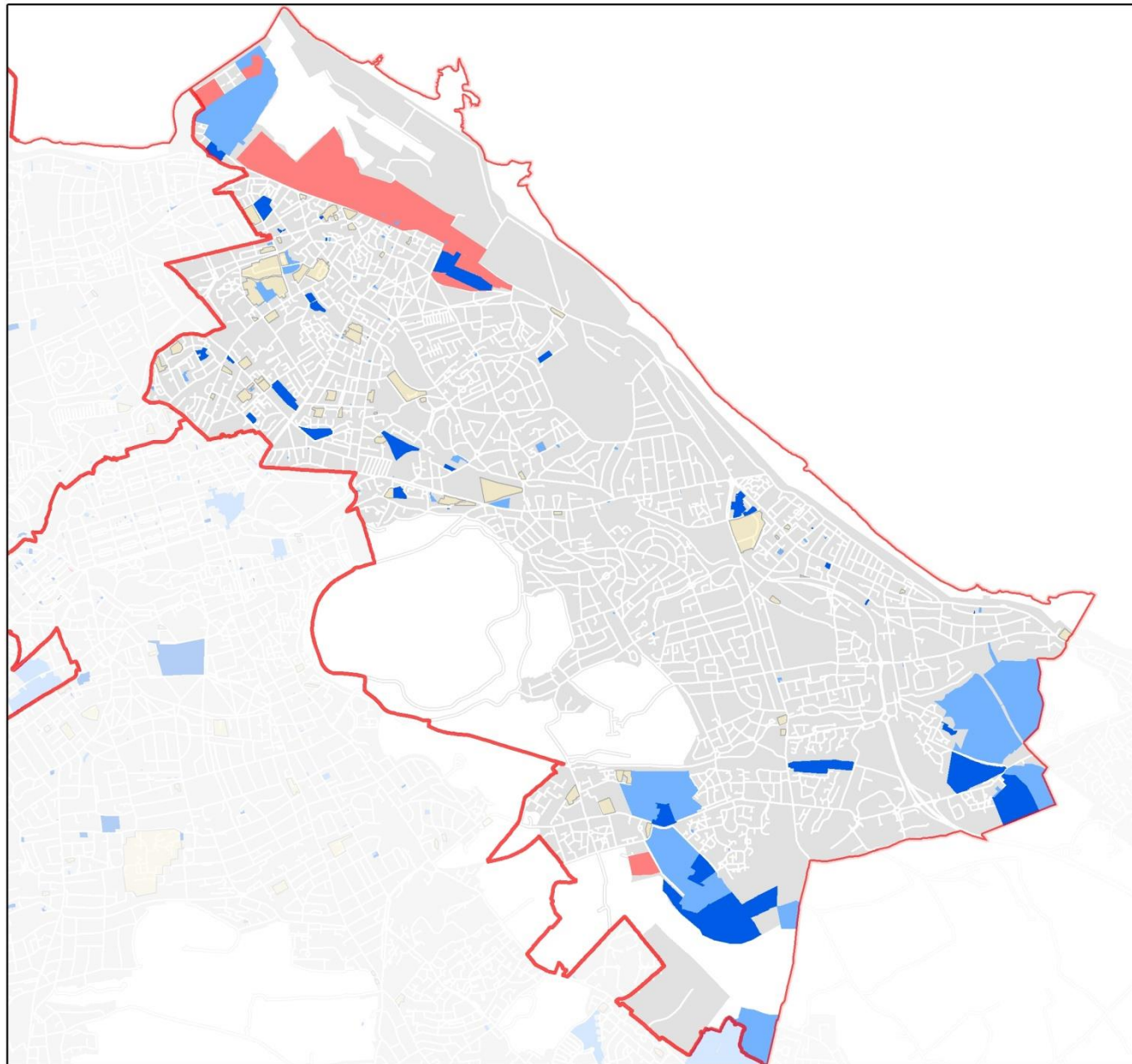
2016

Evaluation



LDP Spatial Strategy






Legend

3,331  Under Construction

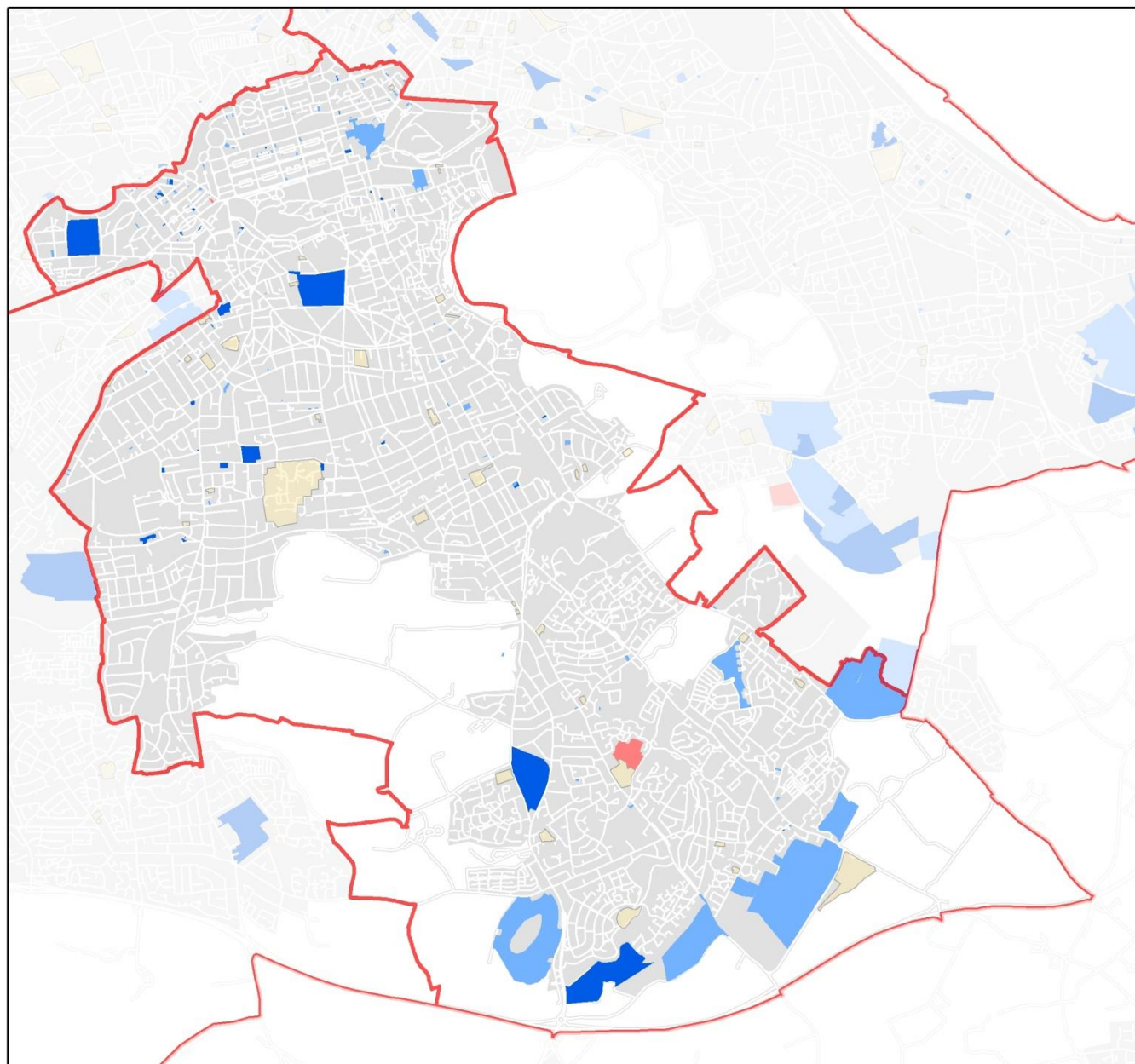
5,128  Other Effective

4,231  Constrained

12,690

 Other housing potential

North East Locality
Housing Land Supply



Legend

1,052 Under Construction

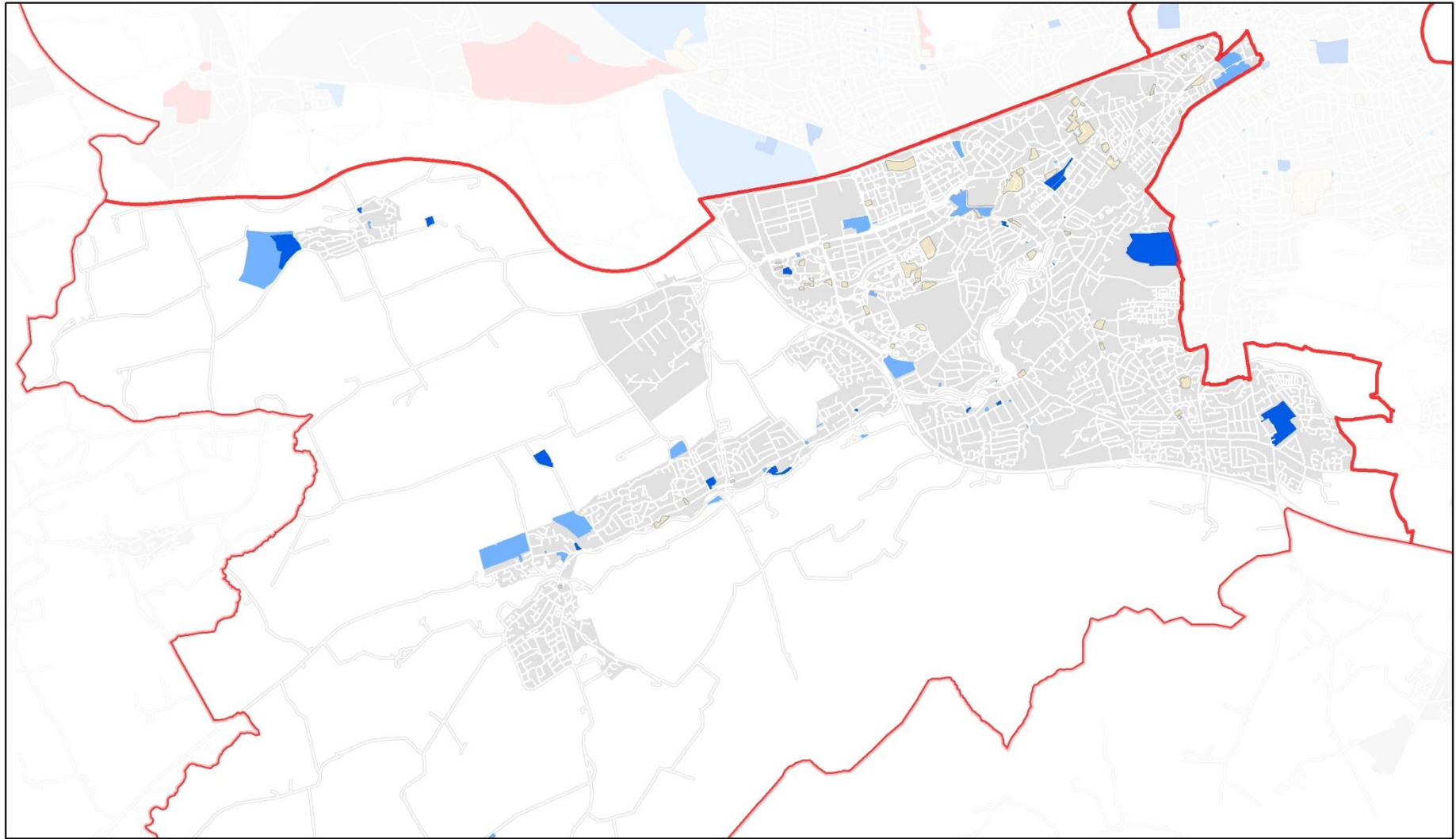
2,630 Other Effective

251 Constrained

3,933

Other housing potential

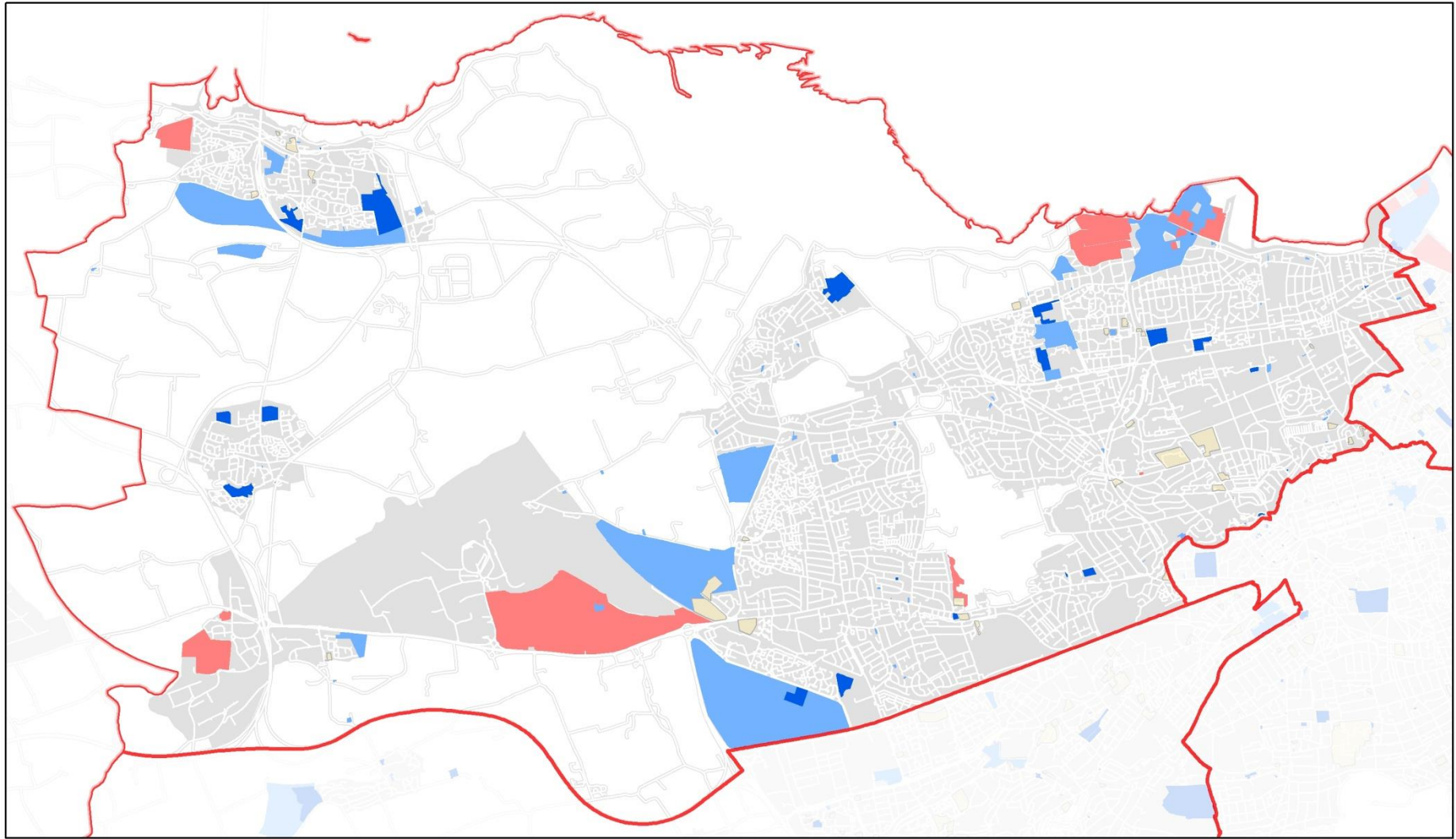
South East Locality
Housing Land Supply




529 Under Construction
1,871 Other Effective
0 Constrained
2,400

Other housing potential

South West Locality Housing Land Supply



1,090  Under Construction
7,801  Other Effective
3,360  Constrained

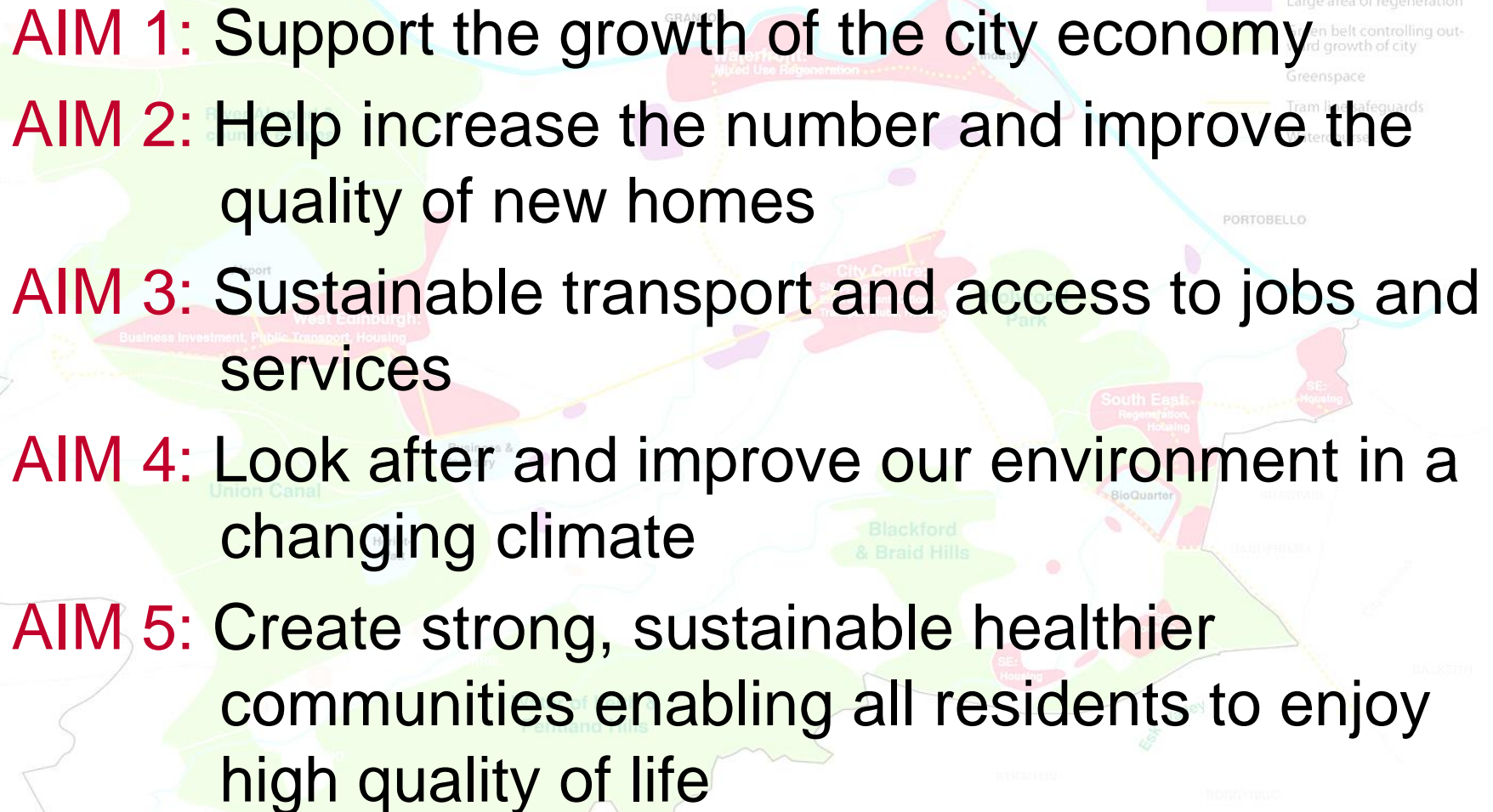
 Other housing potential

12,251

North West Locality Housing Land Supply

Aims

Infrastructure Growth

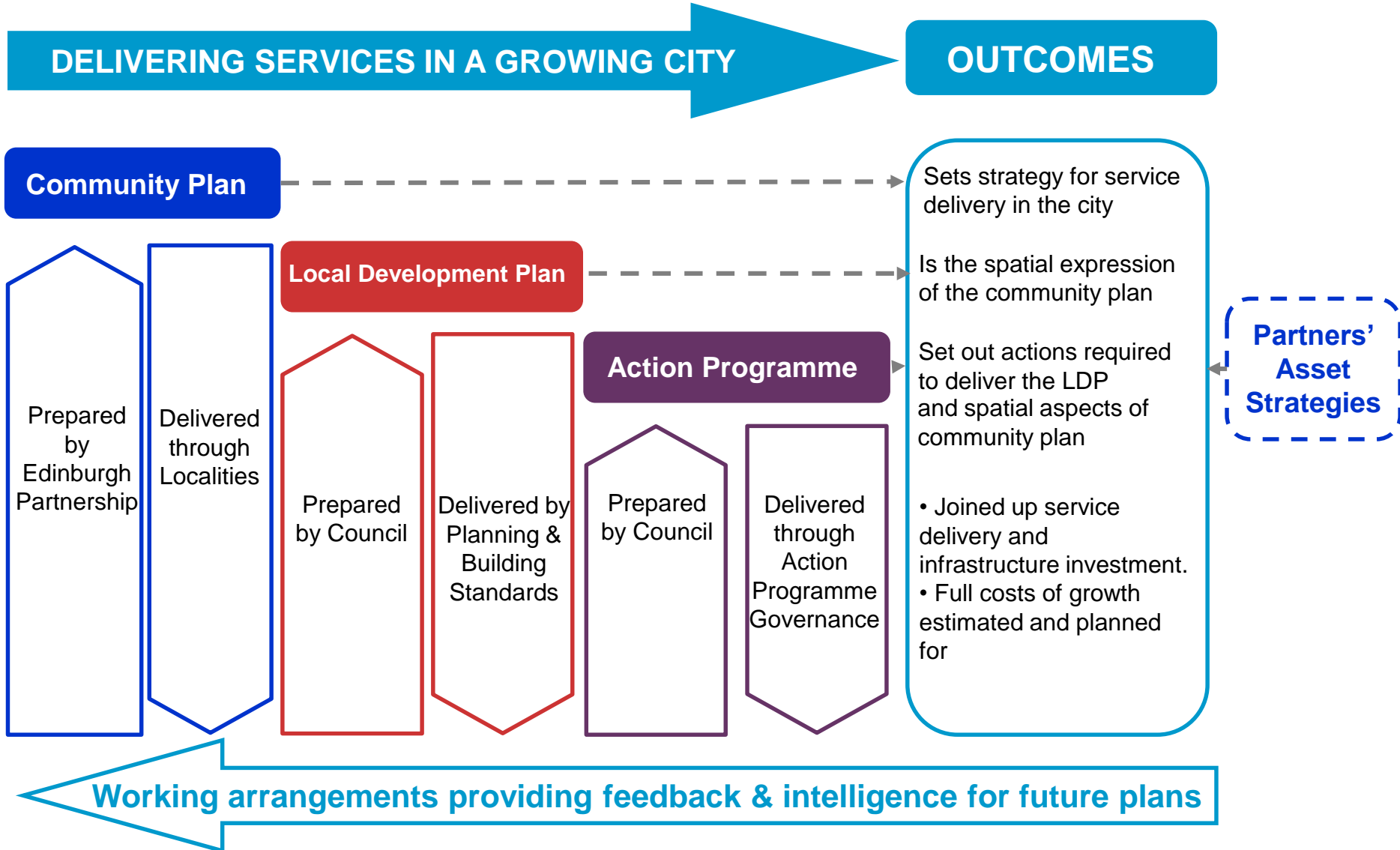
- 
- AIM 1:** Support the growth of the city economy
 - AIM 2:** Help increase the number and improve the quality of new homes
 - AIM 3:** Sustainable transport and access to jobs and services
 - AIM 4:** Look after and improve our environment in a changing climate
 - AIM 5:** Create strong, sustainable healthier communities enabling all residents to enjoy high quality of life

LDP Action Programme

- Cumulative impacts:
 - transport, education
 - healthcare, greenspace
- Contribution Zones
- Identifies actions & costings
- Links to Supplementary Guidance
- Developer contributions will not cover all costs – funding gaps
- Update annually



Community Planning & Spatial Planning

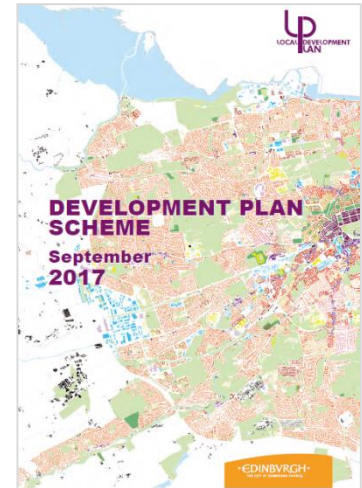


Actions for Partners

- Consider adopted Local Development Plan and its Action Programme
- Implications:
 - Service delivery
 - Infrastructure investment / asset strategies
- Involvement in LDP 2 project:
 - Early work: start 2018
 - Consultation in late 2018
 - Proposed Plan in 2019
 - Adoption by end 2020

Engagement

- Consultation Hub
- Development Plan Scheme
- Stakeholder Feedback on first LDP
- LDP 2 – after SDP 2
- 2050 City Vision
- New Community Plan
- Locality Improvement Plans



Strategic Framework



@planningedin

www.edinburgh.gov.uk/localdevelopmentplan

